

Gustavo Ramos Supply List - Online

Paints:

Permalba White

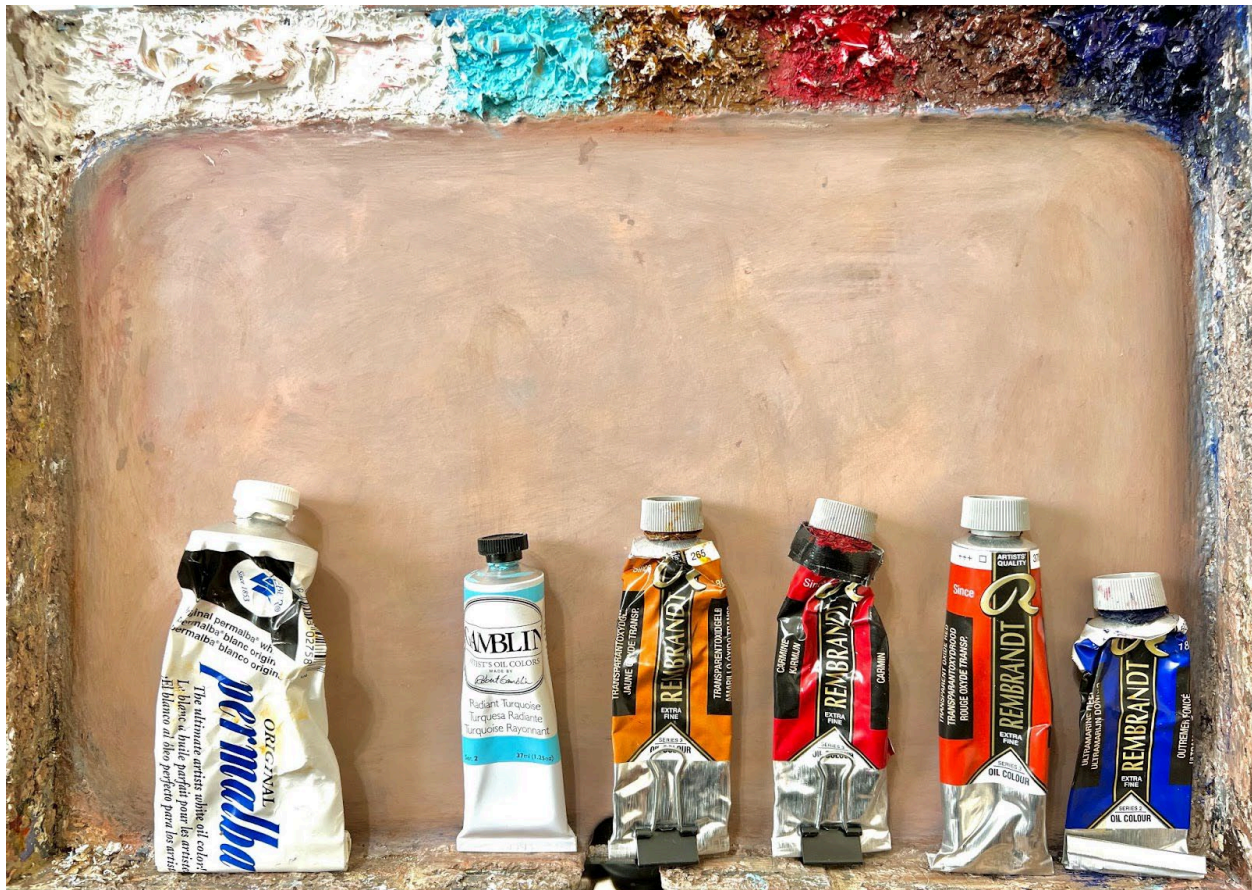
Radiant Turquoise (Gamblin)

Transparent Oxide Yellow (Rembrandt or Michael Harding)

Carmine (Rembrandt)

Transparent Oxide Red (Rembrandt or Michael Harding) or Burnt Sienna (Windsor Newton)

Ultramarine Deep (Rembrandt)



Brushes:

Rosemary & Co “Eclipse” Extra-Long Combers, sizes $\frac{1}{8}$ ”, $\frac{1}{4}$ ” and $\frac{3}{8}$ ”.



Synthetic Round brushes of any brand, a few different sizes large and small.
My go-to set at the moment is “Artist’s Loft Watercolor Brown Synthetic Brushes 8pc”. Aside from the occasional loose ferrule, they are useful cheap brushes.



Medium:

Mix of ½ Galkyd Lite OR Walnut Alkyd, ½ Odorless Mineral Spirits (Gamsol)



Painting surface:

A fine texture panel between sizes 11x14" and 16x20".